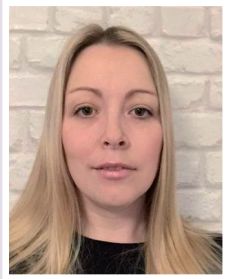


## Johanna Hart, Service Coordinator



I am passionate about working for JCR because of the tangible difference to people's lives the service makes. Visiting a client and hearing what the service has meant to them is one of the most rewarding things I do.

I joined the council after having a completely different career in banking because I wanted to help others. Over the past 10 years I have found it to be an organisation that invests in you as an individual. I am a strong believer in nurturing others and giving them the opportunities, skills and tools to grow their own career. I hope you can see from this leaflet that you can start your career with JCR as a Support Worker, and then enter a number of career pathways within the service and we will fully support you to achieve this."

*"The encouragement and support I have received has been second to none"*

### Johanna's pathway

When I joined East Sussex County Council I had no experience in care. My first role was as a Rehabilitation Support Worker and later I became a Senior Care Officer. I joined JCR as a Deputy Manager after gaining experience in other roles. I then became a DPS Manager before I moved on to my current role.

## Contact details

If you think you have what it takes, why not consider a job as a Support Worker with the JCR team?

Please contact one of our teams for more information:

### Lewes

01273 336600

### Eastbourne

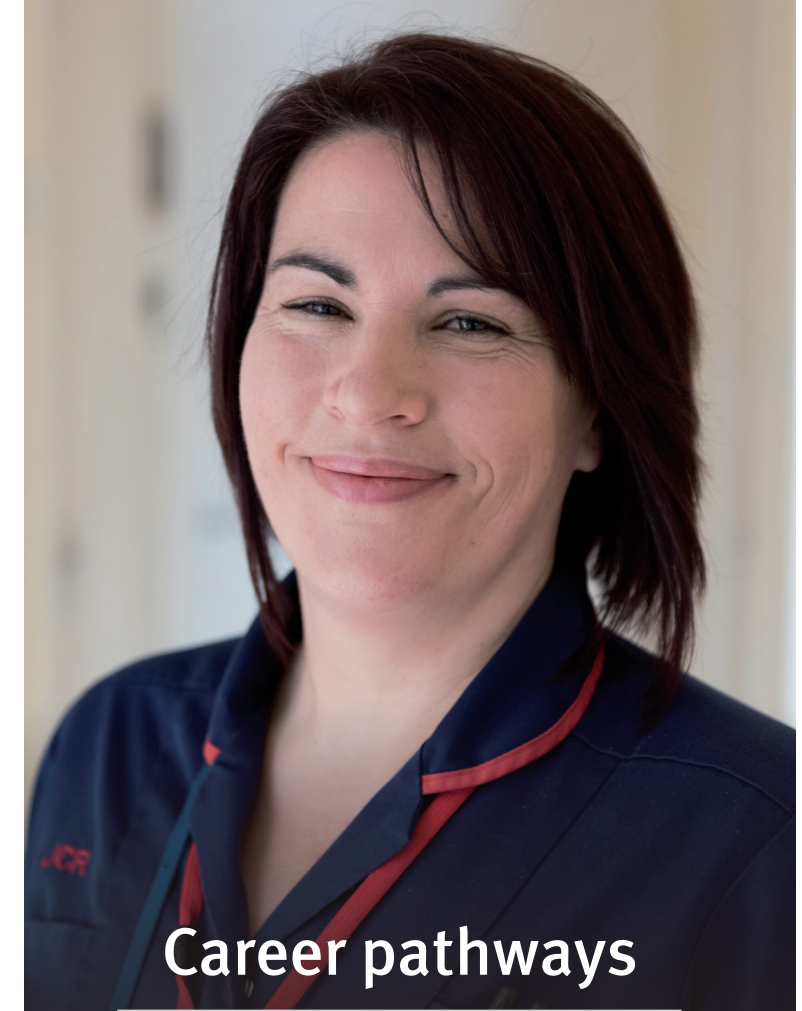
01323 466565

### Bexhill

01424 726750

[eastsussex.gov.uk/workwithjcr](http://eastsussex.gov.uk/workwithjcr)

Apr 2018 · 16-17 040



## Career pathways

change *your* world and *theirs*

Work with older people as part of the Joint Community Rehabilitation team. Help someone get back on their feet.

**As a Support Worker in the Joint Community Rehabilitation Service, we will invest in you, allowing you to gain the skills and training to pursue many different careers in the service if you want to progress.**

**The training you will receive as a Support Worker includes:**

- Dementia
- Medication
- Infection control
- Moving and handling
- First aid
- Health and safety
- Food hygiene
- Nutrition

### **Duty Senior Support Worker**

First point of contact for client referrals, Support Workers and other professionals to resolve enquiries. Allocates work, monitors and organises admission and discharge of clients.

### **Senior Support Worker**

Works with clients to determine the best care package and liaises with partners on its delivery. Acts as a key worker to clients.

### **Reviewing Officer**

This role works with individuals and families to review JCR clients and assess their needs.

### **Deputy DPS Manager**

Supports the DPS Manager and deputies for them. Responsibilities include quality monitoring documentation and gathering client feedback.

## **Progress to a managerial role within the team**

### **DPS Manager**

Takes the lead in delivering services that ensure client needs are met effectively and efficiently.

### **Service Coordinator**

Responsible for day to day management of services and ensures consistency across three JCR sites.

### **Practice Manager**

Monitors quality of service and is responsible for examining continuous improvement and consistency across JCR countywide.

### **Operations Manager**

Has strategic oversight of budgets, managing business performance, developing the workforce.

## **Therapy roles**

There is also the possibility to progress to specialist therapy roles within the service - initially as an Occupational Therapy Assistant and then as an Occupational Therapist. Both roles provide support to enable people to recover following an illness, accident or experiencing difficulties due to an illness.

***There are lots of opportunities to progress***